

Eve Taylor® Ultrasonic Micro-therapy Device

“Exfoliate – Clarify – Ionise”



User Guide & Training Manual

Copyright© Eve Taylor London Limited 2020

Eve Taylor® Ultrasonic Micro-therapy Device

“Exfoliate – Clarify – Ionise”



The Eve Taylor® Ultrasonic Micro-therapy Device is a handheld device created for the professional therapist to use within their facial treatments. The supreme technology of the device supercharges professional-use Eve Taylor® products and boosts treatment room results for the ultimate client satisfaction.

The device offers multiple functions allowing a versatile selection of treatments to be performed across a wide selection of skin types and conditions;

Exfoliate; provides removal of dead skin cells and enhances cleansing actions for a smooth, soft, refined complexion.

Clarify; deeply cleanses, breaks down sebum, loosens comedones ready for extractions and refreshes the skin.

Ionise; propels action ingredients into deeper skin layers for increased product effectiveness and visible positive results.

Collectively, the versatile functions of this device, widens your treatment selection and incentivises clients to return for increased treatment results.



Device Specification

Input voltage: DC 5V.

Input current: 1A.

Power 5W.

Net weight: 97.6g.

Device size: 180mm x 52mm x 24mm.

Charging type: USB.

Charging time: approximately 2 hours.

Continual usage time: approximately 1 hour.

Safety and precautions

The **Eve Taylor® Ultrasonic Micro-therapy Device** has been designed to offer longevity for use within the professional environment. To ensure the device maintains its full life, please ensure you observe the following safety points and precautions:

Always check the device before use.

If unit becomes cracked do not use and replace immediately.

Check device and USB charger cord each time before plugging in to charge.

Ensure device is kept on a clean and dry surface area when not in use.

Never immerse the device in water.

Do not use or store in humid areas.

If water seeps into the device housing do not use and replace immediately.

Limit moisture encountering the device and wipe blade regularly.

Always turn off the device after use.

Clean blade and body of device before and after use using a damp cloth and proceed to disinfect using appropriate disinfecting wipes (such as Barbicide wipes or Mundo wipes).

Contraindications

As this device uses an electrical current, we need to ascertain key information prior to the treatment. Use **Eve Taylor® Consultation Card** to determine suitability by assessing any contraindications or considerations.

The following contra-indicates the use of **Eve Taylor® Ultrasonic Micro-therapy Device**:

- Pregnancy
- Pacemaker
- Metal implants
- Facial piercings
- Epilepsy
- Heart conditions
- High or low blood pressure
- Broken skin
- Presence of skin infections
- Clients taking Ro-accutane/Iso-Tretinoin (Exfoliate setting only)

If you are in doubt or your client gives ambiguous answers in your consultation, avoid using the device until you have fully clarified.

Considerations

The **Eve Taylor® Ultrasonic Micro-therapy Device** is designed to be used on a wide variety of skin types and conditions to gain visible results and skin improvements.

For sensitive or rosacea type skins we recommend using the device with caution and advise to only use primarily with 'Ionise +' setting. 'Exfoliate' and 'Clarify -' settings may offer too much stimulation for this kind of skin.

As the device uses an electrical current, it is normal for the skin to experience stimulation, which may be visible in the form of mild erythema. In the unlikely occurrence that the skin experiences irritation or discomfort, we recommend ceasing the treatment and calming the skin with the application of **Ultra Soothing Cleanser** applied as a mini masque for 5-10 minutes.

For client comfort, ensure you have explained the effects of the **Eve Taylor® Ultrasonic Micro-therapy Device** and the high pitched sound it emits, especially when using 'Exfoliate' mode. For any clients with hearing aids/devices, we recommend that they set them to 'off' when using this device to avoid interference or audio discomfort.

When using the **Eve Taylor® Ultrasonic Micro-therapy Device**, always use gentle pressure and work in upward outward motions



Exfoliate

The **Eve Taylor® Ultrasonic Micro-therapy Device** uses ultrasonic technology to emit 25,000Hz vibrations and longitudinal sound waves from the edge of the stainless-steel blade. When the blade is held at a 45-degree angle and passed over moistened/wet skin, the concentrated ultrasonic vibration penetrates into the epidermis. This oscillates corneocyte cells in the stratum corneum layer. The vibration dislodges the cells and lifts them within the moisture on the skin surface, creating a visible moisture mist.

The skin also benefits from the ultrasonic sound waves, propelling surface moisture from the tip of the blade rapidly into the follicles and back out again. This quickly expels pollutants, dirt and grime within a single pass, purifying the skin and removing superficial dirt and sebum for a targeted cleansing action.

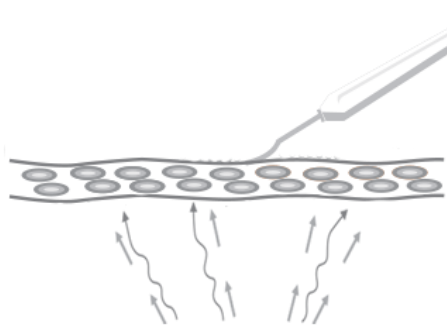
To use:

Ensure skin surface is always wet with an Eve Taylor® spritz **Toner**. This may be spritzed directly onto the skin or spritzed over emulsified **Clear Cleanse®** or a foaming cleanser such as **Purifying Wash** or **Dynamic Resurfacing Cleanser**.

To power up exfoliation it may be used to remove **Micro-fine Daily Exfoliant, Resurfacing Cream Exfoliant** or **Bio Cream Exfoliant**. Ensure spritz **Toner** is applied to maintain a wet surface.

Do not use the blade without moisture on the skin.

Turn on the unit by pressing the central power button, this will automatically engage the '**Exfoliate**' setting and show a blue light above the symbols. A continuous high-pitched buzzing sound will be heard. Hold the device in hand ensuring contact with the metal outer rim. Place the blade pointing down at the skin at a 45-degree angle (the buttons will be facing the client) and gently pass over the dampened surface working upwards from the neck to the forehead. A water spray will be visible showing the ultrasonic vibration working and dislodging skin cells, dirt and grime. Ensure the blade is wiped regularly with sponge or cotton disk to remove debris.



Clarify

The **Eve Taylor® Ultrasonic Micro-therapy Device** offers a high-performance decongesting function to deeply cleanse the follicles of excess oil, loosen impaction plugs and soften the skin in preparation of comedone extractions.

The sound waves emitted by the flat edge of the blade passing over the skin vibrate and oscillate the skin tissues underneath. This loosens solidified impaction plugs in the follicles and assists with the release of sebum, by aiding with saponification.

To use:

Following cleansing, dispense 2 pumps of **Desincrustation Gel** into a bowl and whisk into a foam consistency using **Eve Taylor® Fan Masque Brush**. Apply the foam in a thick 'blobbing' application to congested areas and where extractions will be performed, typically on the cheeks, nose, forehead and chin.

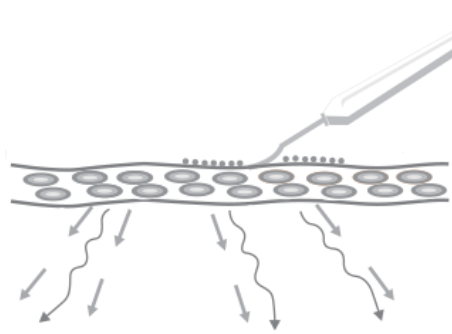
Turn on the unit by first pressing the central power button, continue to press '**Pad**' when a blue light will show, press the '**Clarify -**' button and a second blue light will show; an intermittent pulsing buzzing sound will be heard. Hold the device in hand ensuring contact with the metal outer rim. Place the flat edge of the blade on the skin (you will see the buttons facing up) and work over the areas with **Desincrustation Gel** applied in upward circular motions.

Always keep the blade moving and do not allow the blade to become stationary in one place. Your free hand should always be kept in contact with the client's skin, approximately 1 inch from the blade. Periodically wipe the blade to reduce product build up. Continue to work over the areas for 5 minutes in total.

Remove **Desincrustation Gel** thoroughly using damp sponges or steam towels; or for heavily congested skin, use the blade edge of the device on '**Exfoliate**' setting to remove excess product and surface congestion, followed by damp sponges or steam towels.

If specific comedone extractions are required, proceed to extract using manual technique, or by using **Eve Taylor® Ultrasonic Micro-therapy Device**. Turn on the unit by pressing the central power button, this will automatically engage the '**Exfoliate**' setting and show a blue light above the symbols. A continuous high-pitched buzzing sound will be heard. Place the blade pointing down at the area of extraction at a 45-degree angle (the buttons will be facing the therapist this time).

Use gentle pressure to push at the side of the follicle and hold for a few seconds, increase pressure slightly and see the follicular impaction plug raise from the follicle. Wipe blade regularly to remove any debris. Continue to perform extractions in this way as necessary and complete by wiping any debris from the skin's surface and finalising by blotting the extracted area with cotton pad dampened with **Tea Tree Hydrolat** or **Purifying Toner**.



Ionise

The **Eve Taylor® Ultrasonic Micro-therapy Device** offers a highly effective method of penetrating and ionising products into the skin using supreme ultrasound technology to create a form of ultrasound and sonophoresis.

Ultrasound uses sound waves in excess of 20,000Hz to create physiological effects within the skin tissues. Similar to ripples on water, the waves created increase the penetration of topically applied ingredients into the epidermal layers to achieve intensive results for the skin.

One of the effects ultrasound creates is cavitation – the formation and collapse of gas bubbles. The intensity of cavitation causes small holes in the corneocytes, in-turn enlarging intercellular spaces for topically applied formulations to be deeply absorbed. Heat is also created and increases the fluidity and temporary disorder of Stratum Corneum lipids; this creates direct pathways for the diffusivity of molecules through the skin barrier and thus assisting with the ionisation of skin care products within the professional facial treatment.

To use:

Apply appropriate **Response Serum** or **Age Resist Serum** to the skin and continue with application of **Electro Gel, Soothing Masque, Balancing Masque, Purifying Masque** or **Anti-oxidant Masque** using **Eve Taylor® Fan Masque Brush**.

Turn on the unit by first pressing the central power button, continue to press '**Pad**' when a blue light will show, press the '**Ionise +**' button and a second blue light will show; an intermittent pulsing buzzing sound will be heard. Hold the device in hand ensuring contact with the metal outer rim.

Place the flat edge of the blade on the skin (you will see the buttons facing up) and work over the areas in upward motions. Always keep the blade moving and do not allow the blade to become stationary in one place. Your free hand should always be kept in contact with the client's skin, approximately 1 inch from the blade. Periodically wipe the blade to reduce product build up.

Continue to work over the areas for 5-10 minutes in total. Remove **Electro Gel, Soothing Masque, Balancing Masque, Purifying Masque** or **Anti-oxidant Masque** thoroughly using damp sponges or steam towels.

Product compatibly

The **Eve Taylor® Ultrasonic Micro-therapy Device** has been created to be compatible with the following Eve Taylor® products to supercharge their effects and increase results:

Exfoliate

Ultra Soothing Toner

Soothing Toner

Balancing Toner

Purifying Toner

Dynamic Hydrating Toner

*Purifying Wash**

*Dynamic Resurfacing Cleanser**

*Micro-fine Daily Exfoliant**

*Resurfacing Cream Exfoliant (formerly Active Complex Exfoliant)**

*Bio Cream Exfoliant**

*Ensure **Toner** is spritzed over the top to maintain moisture levels on the skins surface.

Clarify -

Desincrustation Gel

Electro Gel or Soothing Masque customised with Tea Tree Hydrolat or Lemon Hydrolat

Ionise +

*Oxygen Response Serum**

*Pigment Response Serum**

*Sebum Response Serum**

*Time-line Response Serum**

*Hydrating Serum**

*Brightening Serum**

*Firming Serum**

Electro Gel

Soothing Masque

Balancing Masque

Purifying Masque

Anti-oxidant Masque

*Ensure Electro Gel, Soothing Masque, Balancing Masque, Purifying Masque or Anti-oxidant Masque are applied over the top to ensure conductivity.

Treatments

The **Eve Taylor® Ultrasonic Micro-therapy Device** can be used within any of our prescriptive facial treatments to enhance effectiveness. It can also be used to supercharge our selection of condition specific facials such as the **Ultra Bright Facial** or **Age Resist Facial**.

Our new **Target+** facial treatments are a selection of 30 minute results focussed facials, specifically created for use with the **Eve Taylor® Ultrasonic Micro-therapy Device**.

Target+ treatments offer condition specific options for outstanding results in half the time of a normal facial treatment, offering clients multiple options to combine their treatment with other services when they visit the salon. This gives additional retail opportunities and increased revenue to the business.

All treatment protocols are in the **Skincare Navigator Volume 5**. Alternatively, they can be viewed in the professional area of the website under 'facial treatments'.